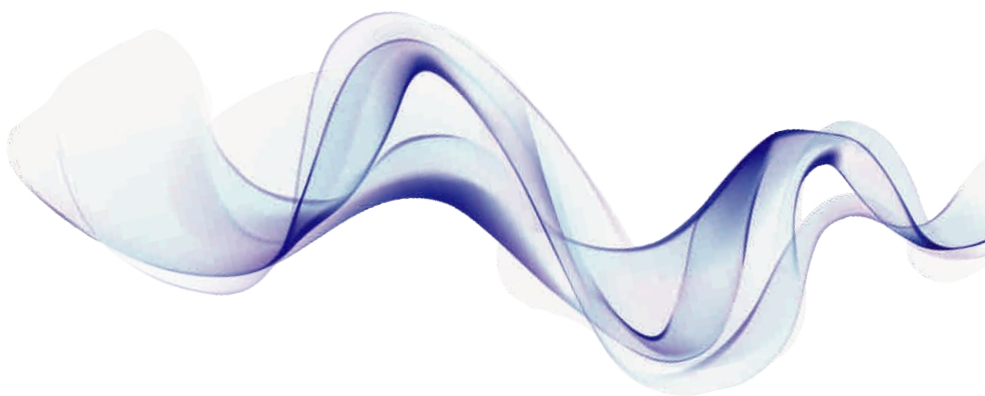




M800 Vet

Handheld Veterinary Monitor



Physical Specifications

Mainframe weight: <400g (full configuration, including the batteries)
Mainframe size: 58.5mm(W)×123mm(H)×28mm(D)

Environmental Specifications

Temperature: Operating: 5 °C to +40 °C
Storage: -20 °C to +55 °C

Atmospheric: Operating: 860hPa to 1060hPa
pressure Storage: 500hPa to 1060hPa

Humidity: Operating: 15% to 85%(non condensing)
Storage: less than 93%(non condensing)

Charging Specifications

AC-DC Adapter(Optional): Input: 100~240VAC, 50/60Hz, 0.5A
Output: 5V, 1.5A

Battery Specification:

Type: 1.5V, AA alkaline battery
Capacity: 2000mAh
Quantity: 3
Run time: >14 hours
Shutdown delay: 10 min(After the first "low battery" alarm)

Display

Size: 2.4 inch
Resolution: 320*240 pixels

Indicating Lamp

Alarm indicating 1(Yellow/Red), on the top of screen.
Battery charging indicating lamp: 1 (orange)
When charged, it lights orange.
When fully charged or not charged, it doesn't light.

Buttons

Quantity: 6
Functions: Power button, Up button, Down button, Left button, Right button, and Alarm pause button

Data Storage

Displaying way: Trend tabular
Trend interval: 2 seconds to 30 minutes
Trend parameter: HR, SpO2
Trend data:
Spot-check: ID from 1 to 99, 300 groups can be stored for each ID.
Continuous: ID is 0, 60000 groups can be stored.

BLT SpO2

Measurement range: 0~100%
Resolution: 1%
Accuracy: 70~100%: ± 2%
0% to 69%: unspecified
Refreshing rate: <13 seconds
Pitch Tone: with

PR

Measurement range: 25 bpm ~250 bpm
Resolution: 1 bpm
Accuracy: ±2% or ±1 bpm, whichever is the greater
Refreshing rate: <13 seconds

Nellcor SpO2 (Option)

Measurement range: 0%~100%
Resolution: 1%
Accuracy: 70% ~100% : ±2% ~±3%
0% to 69%: unspecified
Refreshing rate: 7 seconds
Pitch Tone: with

PR

Measurement range: 20 bpm ~300 bpm
Resolution: 1 bpm
Accuracy: 20 bpm ~ 250 bpm: ± 3 bpm
251 bpm ~ 300 bpm: unspecified
Refreshing rate: 7 seconds

ECG Specifications

Lead type: Standard: 3-lead (RA, LA, LL or R, L, F)
Gain: 2.5mm/mV(×0.25), 5mm/mV(×0.5), 10mm/mV(×1)
Input impedance: ≥5.0MΩ
Input current: <0.1 uA
Baseline recovery: ≤ 3 s
Electrode offset potential: ±500 mV d.c.
ECG signal input range: -6.0mV to +6.0mV
CMRR: ≥90dB
Leakage Current: < 10 uA
Frequency response: 0.5Hz-40Hz
Standardizing signal: 1mV ±5%
Defibrillator-proof
Electrode off indicating: with
Work mode: continuous monitoring and spot-checking mode
HR range: 10 bpm ~300 bpm
HR Resolution: 1 bpm
HR Accuracy: ±1% or ±1 bpm, whichever is the greater

Standard Configuration

SpO2, Pulse Rate

Option

Nellcor SpO2, ECG

The brochure may be revised or replaced by BIOLIGHT at any time without notice.

M800 Vet-z1807-01

Guangdong Biolight Meditech Co., Ltd.

Add: NO.2 Innovation First Road, Technical Innovation Coast, Hi-tech Zone, Zhuhai, P. R. China, Postcode: 519085
Tel: +86-756-3399935 Fax: +86-756-3399911 E-Mail: overseas@blt.com.cn www.blt.com.cn

