

# HOW-TO

## REPROCESS WALL DISPENSERS AND PUMPS



The Robert Koch-Institute recommends: «Dispensers for hand washing lotions and disinfectants have to be easily cleaned and disinfected. Lotion dispensers must be thoroughly cleaned and disinfected whenever bottles are changed. (...) Bottles which are not completely empty must not be refilled. The same requirements must be fulfilled for dispensers delivering hand care lotions.»

[Source: Robert Koch-Institute, recommendations for hand hygiene, section 2.3].

### DISMOUNTING OF THE DISPENSER (for both types of dispensers)

- Remove the bottle from the dispenser.
- Remove the optional fixation screw.
- Remove the dispenser from the wall plate: press the latch on the back wall of the dispenser and slide the dispenser upwards, off the plate.



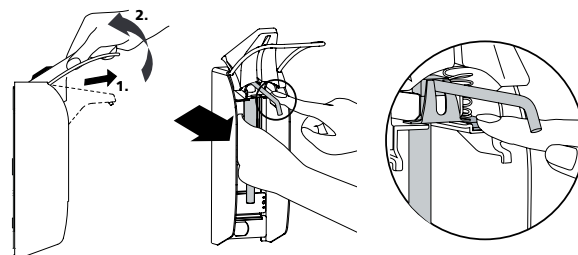
### Wall Dispenser plus ELS, TLS, E, T with plastic pump

For delivery of B. Braun alcohol based hand rubs, hand washing lotions and hand care lotions. The plastic pumps are compatible with hand care lotions.

## Wall Dispenser plus ELS, TLS, E, T with plastic pump

Gently pull face shield forward and then lift upwards. Next, press down on the pump lock with a finger, and pull the pump forwards (see images).

- For inserting the pump gently pull face shield forward and then lift upwards, then insert the pump. Avoid touching the suction lance of the reprocessed pump or clean the suction lance with a disposable paper tissue soaked in an alcohol based hand rub (e.g. Softa-Man®) after insertion.
- The dispenser and stainless steel pump are autoclavable with superheated steam (134 °C, 2 bar, max. 20 min. dwell time).



## BEFORE REPLACING A BOTTLE (for all dispenser types)

Dispensers and pumps for hand washing or hand care lotion must be thoroughly cleaned and disinfected whenever bottles are changed to guarantee hygienic and proper functioning of the dispenser.

## MANUAL CLEANING AND DISINFECTION OF PUMPS AND DISPENSERS (for all dispenser types)

### Pump:

- Remove pump from the dispenser.
- Rinse pump thoroughly with hot water (plastic pump: max. 65 °C !).
- Rinse pump thoroughly with an alcohol based hand rub and allow it to take

### Housing:

- Rinse the housing under hot running tap water. Wash with warm soapy water, if needed use suitable brushes. Perform a final rinse under running tap water. Allow to dry.
- Wipe the housing with a surface disinfectant e.g. Meliseptol® Wipes sensitive. Spray areas that are not reachable for a wipe disinfection e.g. with
- Meliseptol® Foam pure and allow to dry.

## AUTOMATED REPROCESSING OF DISPENSERS AND PUMPS (for all dispenser types)

Processing in automated washer & disinfectant: choose program «Dispenser cleaning» and use pH-neutral cleaning solutions such as Helimatic® Cleaner neutral. Important: If plastic pumps are reprocessed, then the temperature of the whole process must not exceed 65 °C ! Before cleaning or processing in a washer & disinfectant the counter must be removed.

## STEAM STERILISATION:

The dispenser is autoclavable with superheated steam. Plastic wall plate, bottle, plastic pumps (K pumps) and counter are not autoclavable. **Dispensers and pumps which haven't been in use for a longer period of time must be cleaned thoroughly prior to reuse. (e.g. after a long holiday).**

We point out that in case of damage caused by improper handling of the dispenser, the warranty on the part of B.Braun expires. The guarantee of B. Braun is specifically excluded than B. Braun products are used.