

ARSIMED MEDICAL

BT 12 - S

ARCHIMED MICRA BLOOD
TRANSFUSION CHAIR (2 MOTOR)

USER MANUAL



 **Order here!**  **PRAXISDIENST**
Medical Supplies since 1953



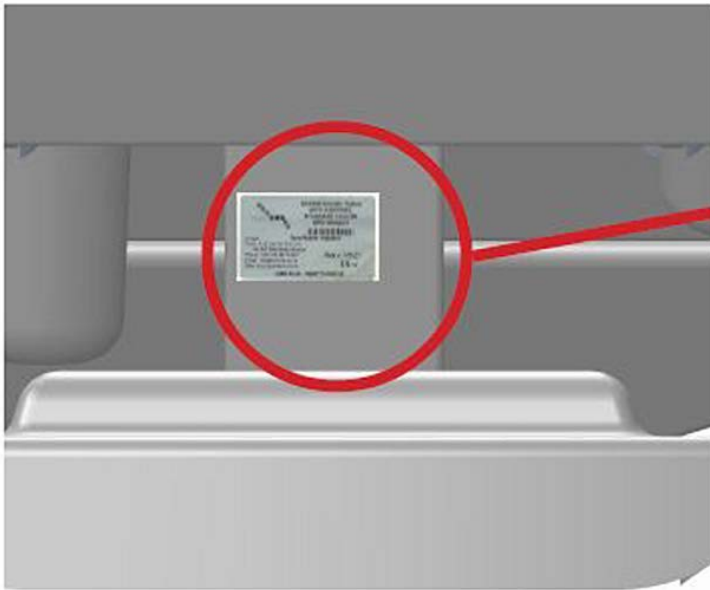
PRODUCT INFORMATION THAT YOU NEED TO PROVIDE FOR SERVICING

DATE OF PURCHASE	
SERIAL NUMBER	
MODEL NUMBER	
NAME OF OWNER / FACILITY / DEPARTMENT	

If the table was purchased from an authorized Arsimed Medical dealer, please fill out the section below.

DEALER'S NAME	
DEALER'S PHONE NUMBER	
DEALER'S ADDRESS	

Serial Number



Arşimed Medikal Kozm.San.Tic.Ltd.Şti.

Tel: 00 90 216 567 8 567

Faks: 00 90 216 567 8 367

Web: www.arsimed.com.tr E-mail:
info@arsimed.com.tr

CHAPTER 1	
INTRODUCTION	
NTypographical Conventions	5
Operating Precautions	6
Features	6
Technical Specifications	7
Electrical Description	8
Product Symbol Definitions	9
table Components.....	10
Operating Instructions For OT03-S GYNAECOLOGY TABLE	11
Using The Handset.....	12
Entry Position	13
Trendelenburg position	14
Back Section Positioning	15
Table Height Positioning	16
Adjusting Headrest.....	17
table Dimensions	18
CHAPTER 2	
PART LIST and ASSEMBLY	19
Low Chassis	19
Leg Rest	20
Head Rest	21
Seat & Motor Compartment	22
Back Rest	23
Arm Rest	24
CHAPTER 3	25
CLEANING AND GENERAL MAINTENANCE	25
CHAPTER 4	26
WHAT TO DO IN CASE OF A POWER CUT	26
CHAPTER 5	27
UNPACKING AND MOVING THE	27
CHAPTER 6	28
LIMITED WARRANTY INFORMATION	28

CHAPTER 1

INTRODUCTION

Purpose

Please read the instructions before using the table. This booklet includes necessary information for the use and operation of the Archimed Micra Blood Donation Chair 2 Motors . Please make this booklet available to the operators who will operate the table and inform any risks that may be encountered while operating the table.

Audience

This manual is intended for use by facility-authorized personnel only. Failure to observe this restriction can result in severe injury to people and serious damage to equipment.

Typographical Conventions

This manual contains different typefaces and icons designed to improve readability and increase understanding of its content. Note the following examples:

Standard text—used for regular information.

Boldface text—emphasizes a word or phrase.

NOTE:—sets apart special information or important instruction clarification. The symbol below highlights a WARNING or CAUTION:

Warning and Caution



- A WARNING identifies situations or actions that may affect patient or user safety. Disregarding a warning could result in patient or user injury.

-A CAUTION indicates special procedures or precautions that personnel must follow to avoid equipment damage.

The symbol below highlights a CAUGHT HAZARD

WARNING: Caught Hazard Warning



ELECTRICAL DESCRIPTION

Mains Power Requirements

Condition	Range
Rated voltage	110 V - 230 V
Power/input	6A / 2A
Frequency	50 Hz - 60 Hz

The electrical power system is insulated from the metal parts of the table. No additional electrical components, such as isolation transformers, are required to make this table meets applicable electrical codes.

All patient support surfaces are fully grounded through a three-wire power cord having a hospital-grade, 3-prong, grounded plug.

Each table is factory-tested for complete operation with and without a load.

Each table is tested for insulation integrity and micro-current leakage.

PRODUCT SYMBOL DEFINITIONS

Product Symbol Definitions






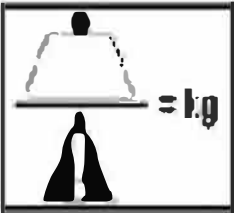


Symbol	Description
	Type B applied part according to EN 60601-1.
IPX4	IEC Standard publication 529
	CAUTION: Consult accompanying documents.
	Conforms to the European Medical Device Directive 93/42/EEC
	Alternative Current
	Direct Current
	Safe working load
	Protective Earthing Ground
	Keep feet claeer of this area. Patential for injury.

TABLE COMPONENTS



- 1) HEAD PART
- 2) BACK PART
- 3) SITTING PART
- 4) LEG SUPPORT
- 5) FOOT EXTEND
- 6) HAND SUPPORT
- 7) ACTUATOR
- 8) ABS
- 9) CASTOR

OPERATION

1. Step Connect the power cable to in 100V-240V 50Hz/60Hz to turn on the table.
Make sure that power cable is connected into a compatible power source.

2. Step Make sure that the little green light on the handset is on.
If they are not on, please check the whether there is power. If the power is on and handset is off, perform troubleshooting.

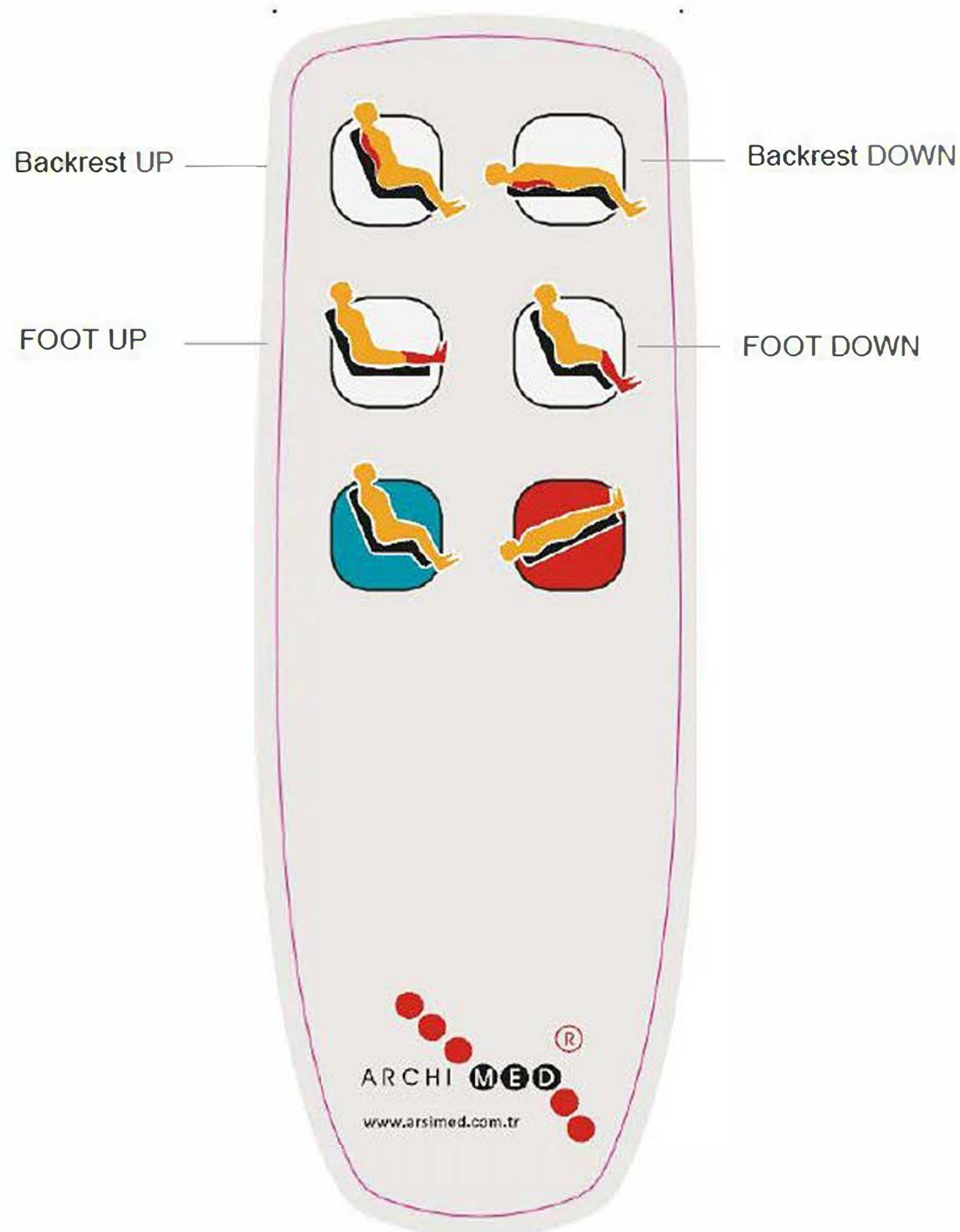


Please make a risk assesment including the below prior to position the patient on the table :

- Risk of getting caught in the table (Hand, arm)
- Possibility to fall off the table
- Patients who have difficulty learning how to use the table
- Curious patients
- Little children
- Mentally handicapped patients
- Unauthorized people

When there is a situation where risk may occur, the tilting adjusting etc. functions should be locked (turned off).

USING THE HANDSET



EQUIPMENT ALERT

The Back function will automatically stop moving when either the Up or Down travel limit is reached, but the actuator motor will continue to run.

Do not continue to operate a function that has reached its limit; this will cause the motor to overheat and may reduce the life of the actuator motor.

Attention: These buttons don't have any function at this table

ENTRY POSITION

ENTRY POSITION



BACK SECTION POSITIONING

The back section can be positioned at any angle between horizontal and +78°.

To adjust the back section from a horizontal position to a table position, depress and hold the Back Up button (1) until the back section reaches the desired angle or the table position is achieved.

To adjust the back section from a table position to a horizontal position, depress and hold the Back Down button (2) until the back section reaches the desired angle or the horizontal position is achieved.

BACK SECTION POSITIONING



Before adjusting the table up or down, make sure that there is nothing (any accessories, objects, cables etc.) under the table. Failing to do so may result in injury or damage to the table.



When positioning the back rest. Look out for objects in the way. Do not let back rest touch objects while in motion. Beep will notify all personell of backrest motion. Should backrest hit an object, motor may break

LEG SECTION POSITIONING

The back section can be positioned at any angle between horizontal and +85°.

To adjust the leg section from a horizontal position to a chair position, depress and hold the Back Up button (1) until the leg section reaches the desired angle or the chair position is achieved.

To adjust the leg section from a chair position to a horizontal position, depress and hold the Back Down button (2) until the leg section reaches the desired angle or the horizontal position is achieved.

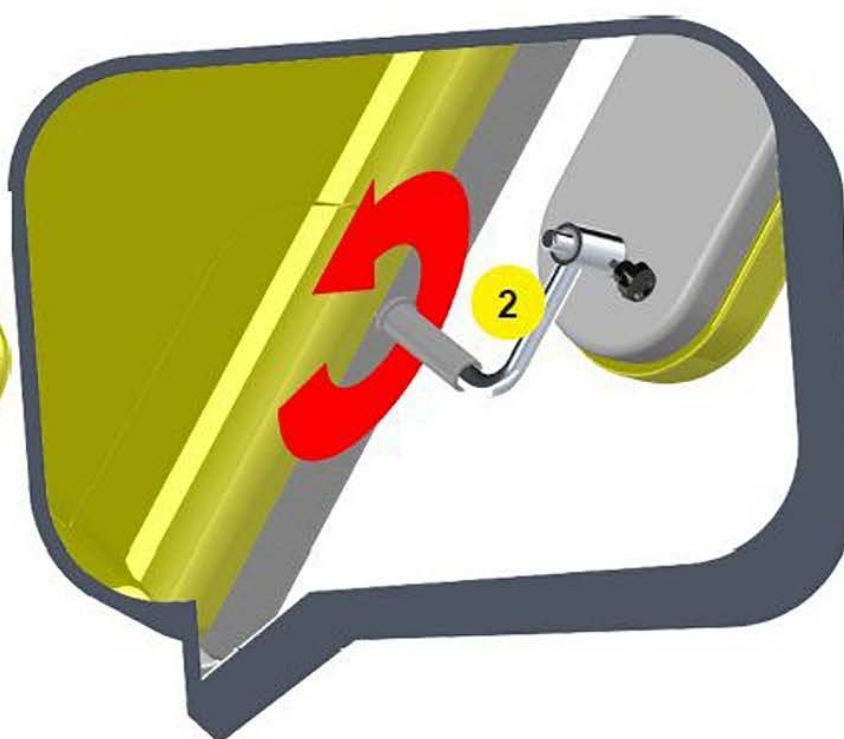
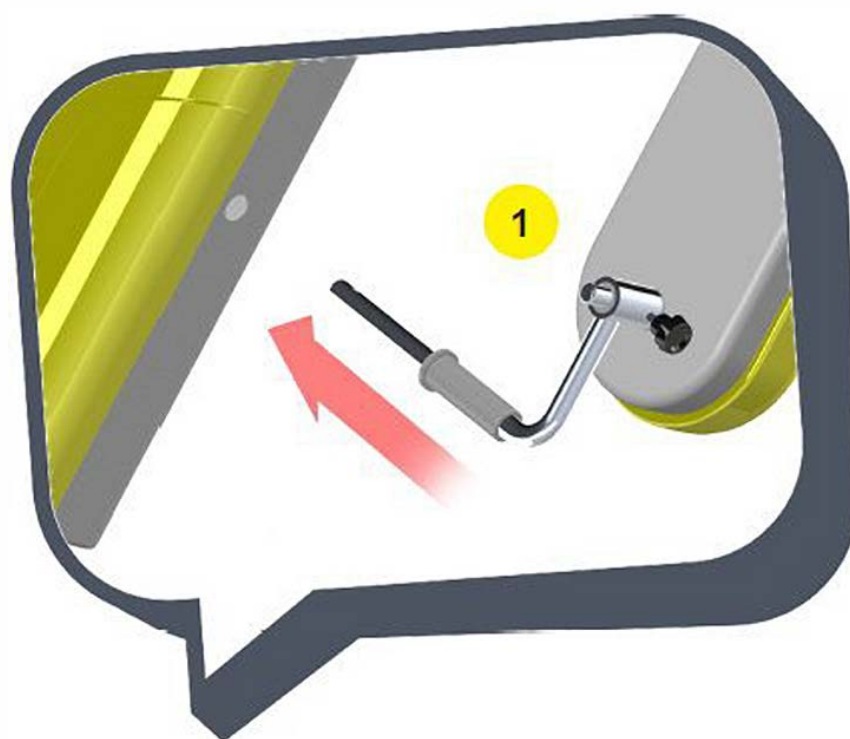
LEG SECTION POSITIONING



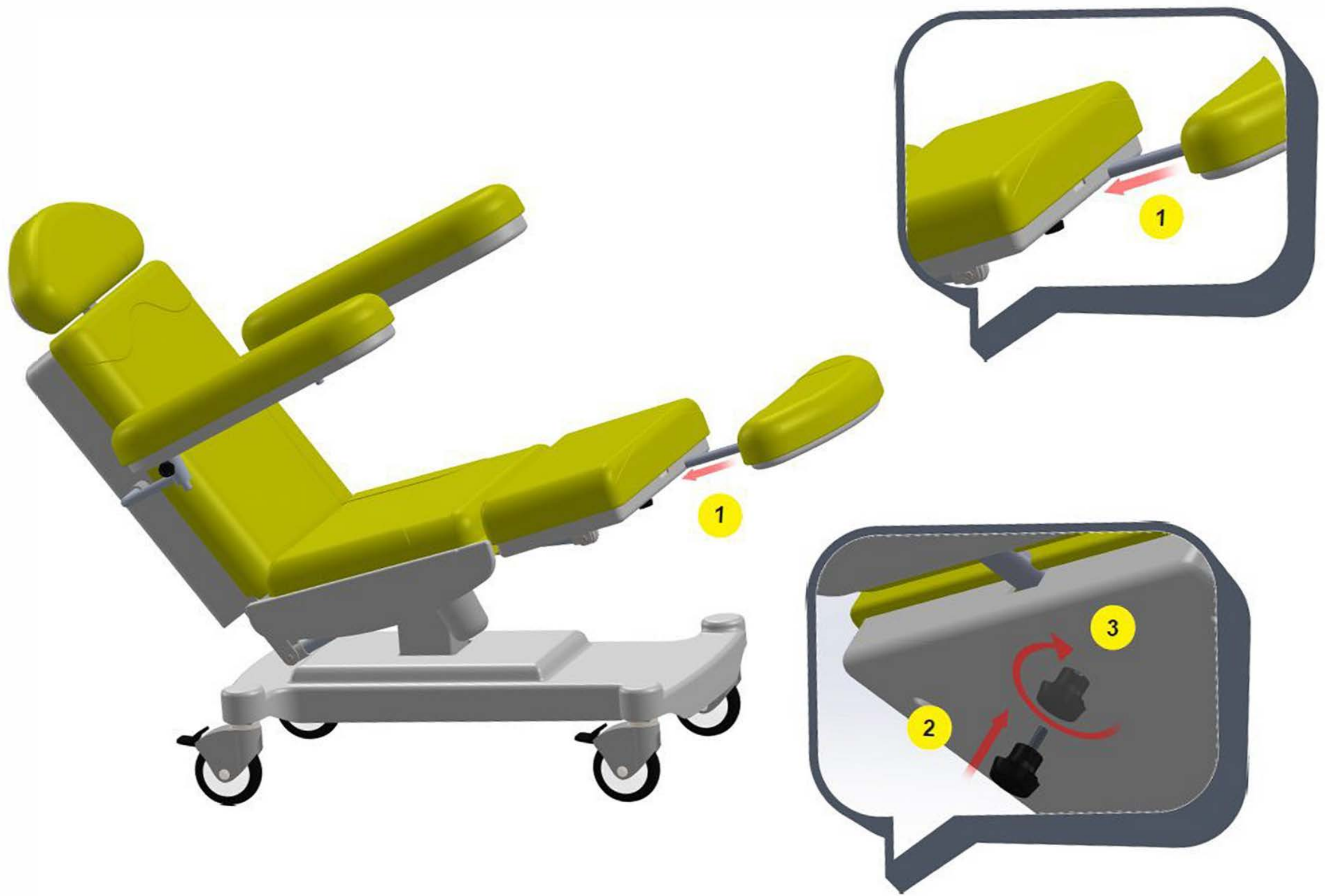
Before adjusting the chair to trendelenburg position make sure that there is nothing (any accessorizes, objects, cables etc.) under the chair. Failing to do so may result in injury or damage to the chair.

Before bring the chair to trendelenburg position, ensure the safety of patients.

ASSEMBLING OF ARM REST



CRAMP PART ADJUSTMENT



CHAPTER 3

CLEANING AND GENERAL MAINTENANCE



Cleaning and general maintenance procedures defined in this manual should be complied.



Do not expose the table to so much moist that liquid may accumulate. Otherwise, injuries to the people or damages to the equipment may occur.

Operating Instructions

- Disconnect the main power of the table.
- Clean the table with a soft, moist cloth and regular decontaminating agent. Do not use too much water.
- Dry the table thoroughly before re-using.

1. Light Soiling/Spills:

- ✓ Solution of 10% liquid soap with warm water applied with a soft damp cloth or bristle brush if necessary.
- ✓ Wipe away dry.

2. Heavy Soiling/Spills:

- ✓ Dampen a soft white cloth with naphtha if available and rub gently.
- ✓ Rinse with a water-damped cloth.

3. More Difficult Stains:

- ✓ Dampen a soft cloth with 10% bleach (sodium hypochlorite) and 90% water -- Cavi wipes acceptable alternative.
- ✓ Rub gently.
- ✓ Rinse with water damped cloth, wipe dry.



For the tables With Batteries:

Never open a discharged battery, dispose of a discharged battery in fire, or have it contacted with water. A new battery should be installed only by an authorized person/technical staff. If the ARSIMED Medical OT03-S GYNAECOLOGY TABLE STANDARD COLUMN is currently in a warehouse – not in operation and supported by a battery, it should be charged in every 3 months to prevent any failure.



Don't use the high pressurized water, any of vaporized cleaning tool, and over 60 °C water.

CHAPTER 4

WHAT TO DO IN CASE OF A POWER CUT



For the tables With Batteries:

Never open a discharged battery, dispose of a discharged battery in fire, or have it contacted with water. A new battery should be installed only by an authorized person / technical staff. If the Gynaecology table is currently in a warehouse – not in operation and supported by a battery, it should be charged in every 3 months to prevent any failure.



When the table is being maintained or transported all the functions should be turned off. Otherwise, the table may be damaged or injuries may happen.



When the patient is left unattended and if the healthcare staff believes that he/she cannot operate the table safely, the functions of the table should be locked/turned off.



Improper operation may damage the table, and cause injury to patients or staff. Please consider following examples of improper use:

- Use of table for purposes other than general or intensive care
- Use of table in a pressurized room
- Operation of table by someone who has not read the instruction manual or who has not been trained
- Operation of the functions simultaneously by more than one person
- A weight of over 180 kg on the table
- Connecting to a power source other than the specified (220V 6A 50 Hz)
- Use of accessories other than the ones defined by the manufacturer
- Pull on the power cable while transporting the table
- Use of the table outdoors or in a vehicle
- Operation or storing of the table other than the specified methods
- Use of the table in an environment with explosion risk
- Moving the table on soft grounds or unsuitable surfaces
- Moving the table on slopes with an inclination of more than 10° C (with or without a patient)
- Using the table in an environment where any combustible gas or vapour is present
- Using the table at temperatures other than the specified temperatures

Any use which violates the terms specified in the user manual.

CHAPTER 5

UNPACKING AND MOVING THE TABLE

UNPACKING THE TABLE

Carefully remove the packing from the table and inspect the table and upholstery for any shipment related damage. If you detect any damage, contact us immediately. Please refer to page to for our contact details.



To avoid any damage to the table, do not use a knife or sharp object to open the chair's packaging and do not lift at the points shown as on the figure below.

MOVING THE TABLE

The table should only be handled and moved by professional personnel.

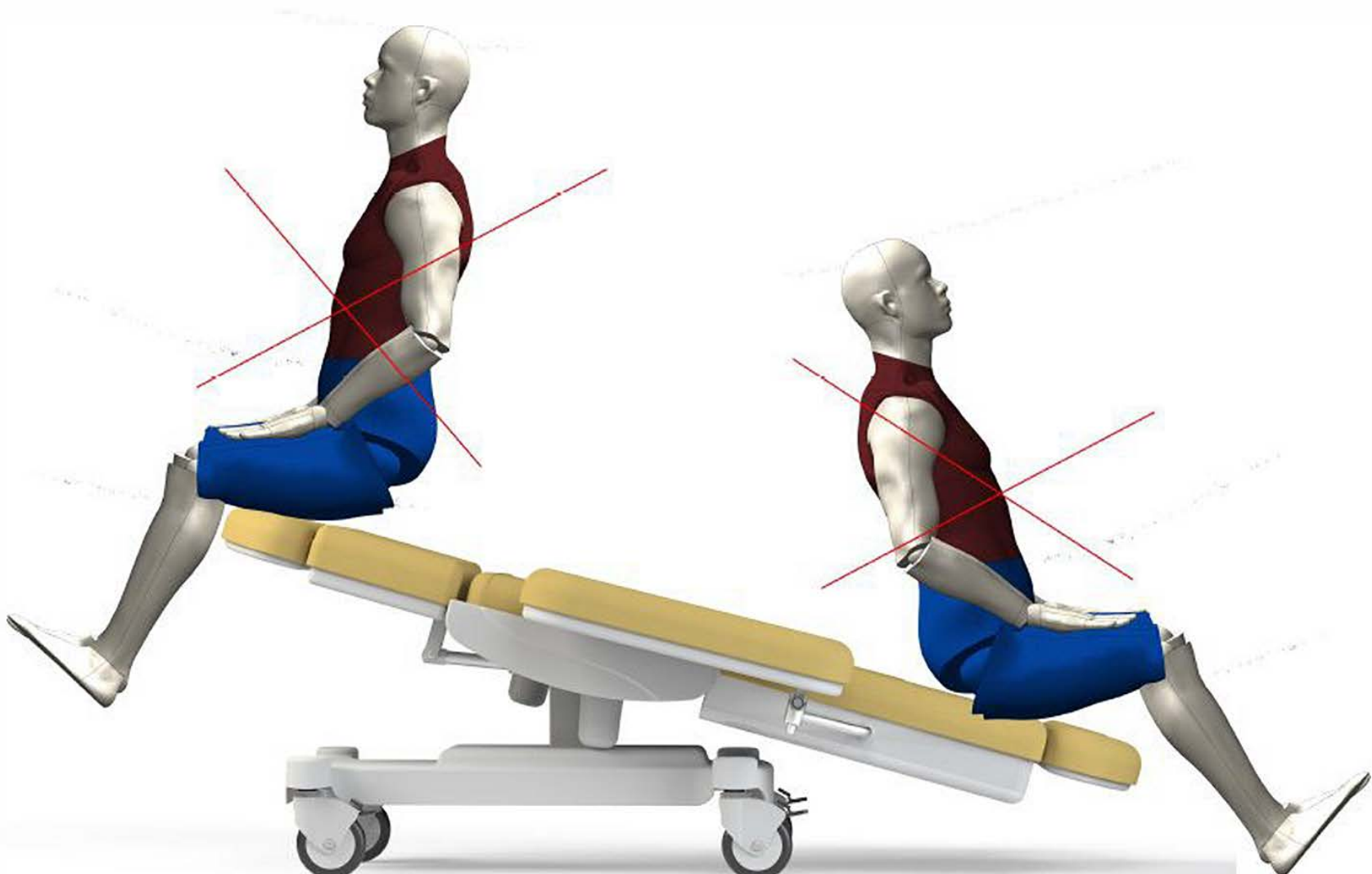


PATIENT POSITIONING

For o safely patient positioning ,ensure the patient sit in the seat section



Do not sit leg or head section . It is not safely for patient and for the chair, miror injuries or chair damage will be appear.



CHAPTER 6

WARRANTY INFORMATION

LIMITED WARRANTY OF ARSIMED MEDICAL

SCOPE OF WARRANTY

Arsimed Medical warrants to the original purchaser its products and components (except for components not warranted under “Exclusions”) manufactured by Arsimed Medical to be free from defects in material and workmanship under normal use and service. Arsimed Medical’s obligation under this warranty is limited to the repair or replacement, at Arsimed Medical’s option, of the parts or the products the defects of which are reported to Arsimed Medical within the applicable warranty period and which, upon examination by Arsimed Medical, prove to be defective.

APPLICABLE WARRANTY PERIOD

The applicable warranty period, measured from the date of delivery to the original user, shall be two (2) years for all warranted products and components.

EXCLUSIONS

This warranty does not cover and Arsimed Medical shall not be liable for the following:

- (1) repairs and replacements because of misuse, abuse, negligence, alteration, accident, freight damage, or tam-pering;
- (2) products which are not installed, used, and properly cleaned as described in Arsimed Medical Manual for this ap-plicable product.
- (3) products considered to be of a consumable nature;
- (4) accessories or parts not manufactured by Arsimed Medical;
- (5) charges by anyone for adjustments, repairs, replacement parts, installation, or other work performed upon or in connection with such products which is not expressly authorized in writing in advance by Arsimed Medical.

EXCLUSIVE REMEDY

Arsimed Medical’s only obligation under this warranty is the repair or replacement of defective parts. Arsimed Medical shall not be liable for any direct, special, indirect, incidental, exemplary, or consequential damages or delay, including, but not limited to, damages for loss of profits or loss of use.

NO AUTHORIZATION

No person or firm is authorized to create for Arsimed Medical any other obligation or liability in connection with the products.

THIS WARRANTY IS ARSIMED MEDICAL’S ONLY WARRANTY AND IS IN LIEU OF ALL OTHER WARRANTIES, EXPRESS OR IMPLIED.

ARSIMED MEDICAL MAKES NO IMPLIED WARRANTIES OF ANY KIND INCLUDING ANY WARRANTIES OF MERCHANTABILITY OR FITNESS FOR ANY PARTICULAR PURPOSE.

THIS WARRANTY IS LIMITED TO THE REPAIR OR REPLACEMENT OF DEFECTIVE PARTS.